



Instruction of CCTV Monitor Integrated Access Control

CCTV-200

1.Brief Introduction

The IP camera can be accessed by PC web-based software to manage the device. The WEB software provides several management functions, such as monitoring preview, recording, and configuration.

2.Log system

Step1: Make sure connect the right network.

Step2: Make sure the PC and the camera in the same LAN network segment.

(If there is no router in the LAN, please manually modify the parameters of the computer host network segment to be the same as the network camera; if there is a router device in the LAN, you do not need to manually configure the computer host network parameters)

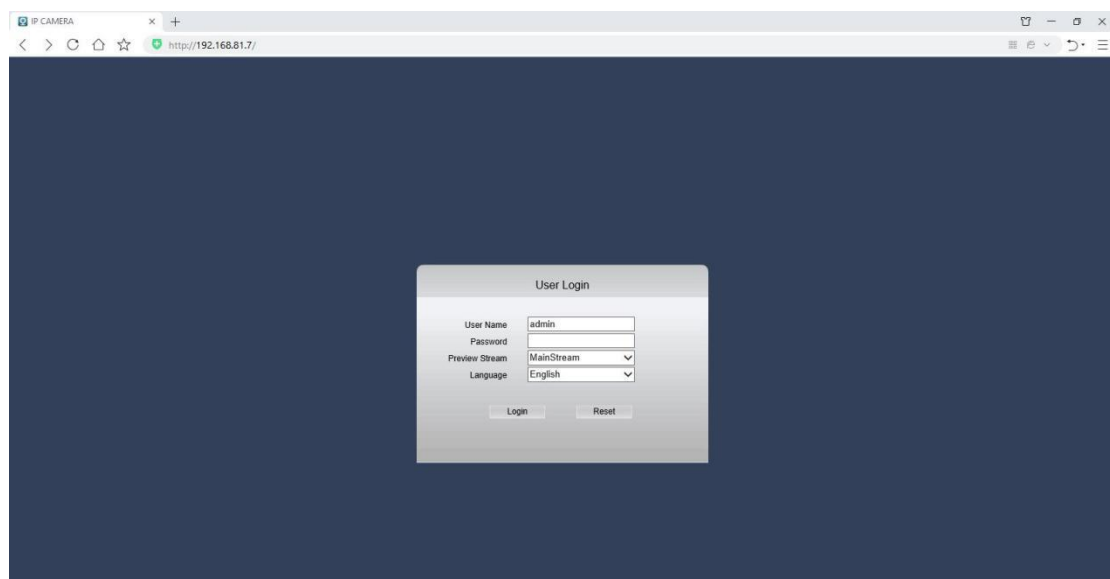
Note: the IP camera default IP address: 192.168.1.11

3.Log steps

3.1 How to log web?

Step1: Open Internet Explorer, and enter the IP camera's IP address:

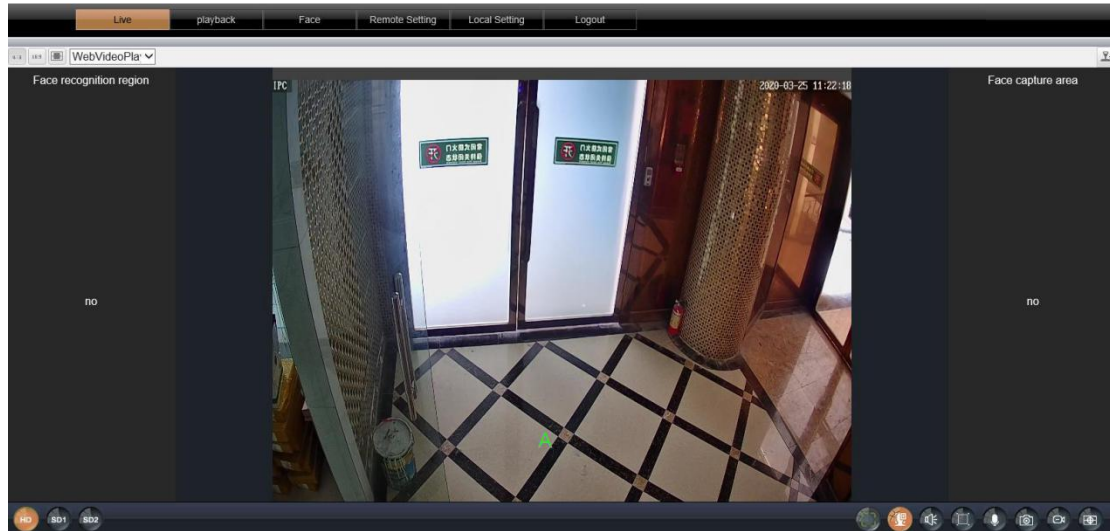
Step2: After login, the system will pop up the plug-in installation tool. Please download and install the plug-in tool. After the installation ,enter the user name and password, and click the login system button to log in to the system.As shown in below:





Note: User name: admin
Password is blank.

Step3: After successfully web login-in, the interface will show below photo



4.Face image size requirements

4.1 Picture resolution ratio:

Picture JPG format / 480*480 resolution / 72dpi 256kb or less
(face proportion and size must match).

4.2 Picture resolution setting method:

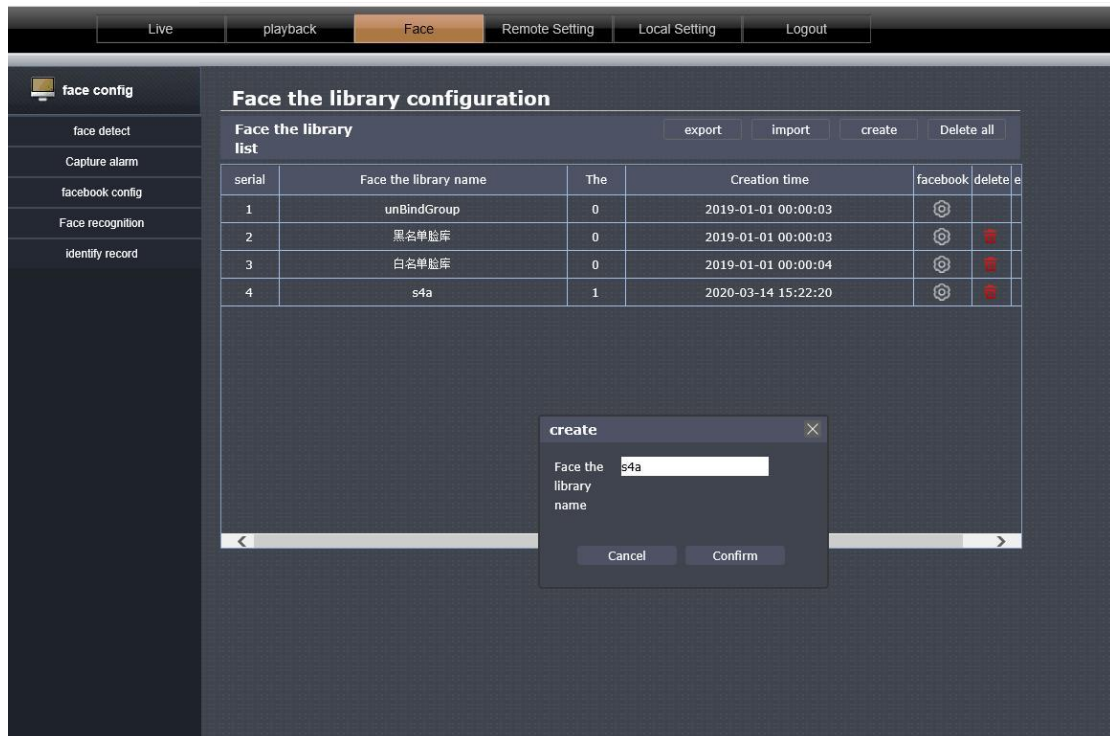
Select the drawing tool on your computer and drag the picture in. Select the picture adjustment pixel and change it to 480*480.

(PS:Select the photo tool on your computer and drag the picture in. Select the picture adjustment pixel and change it to 480*480.)

5.How to add the face database

5.1 Create face database:

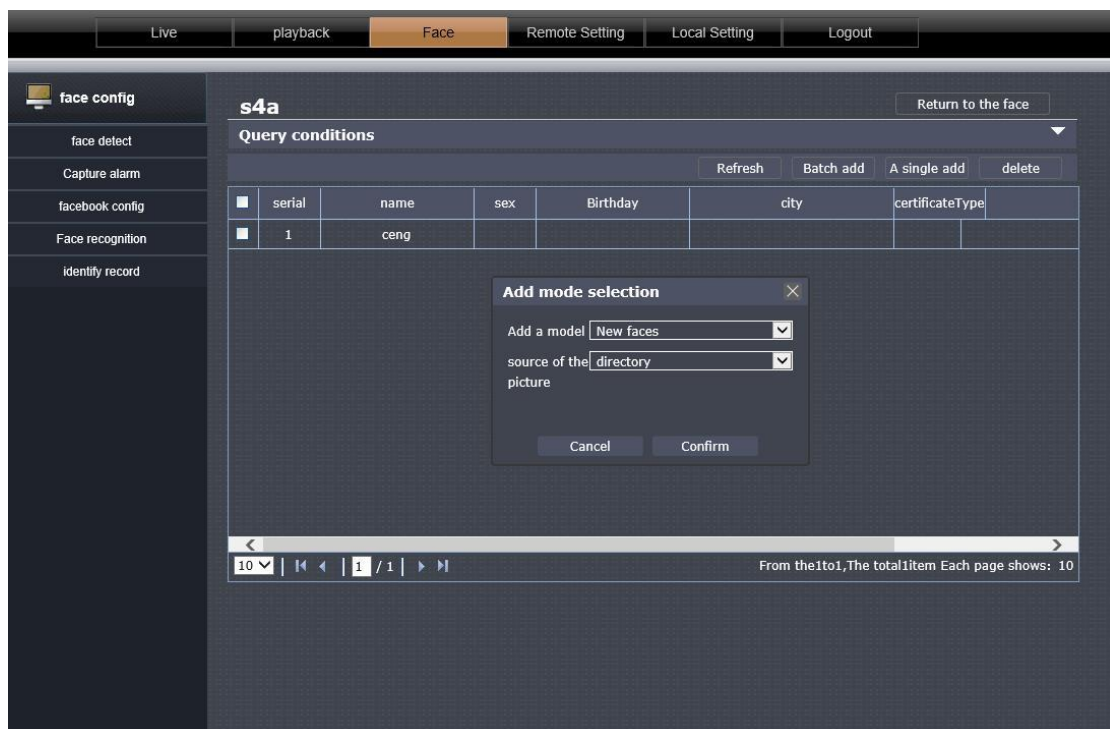
Select "Face Configuration-Face Database Management-Create" to create a white list of face databases or customize a name of a face database;

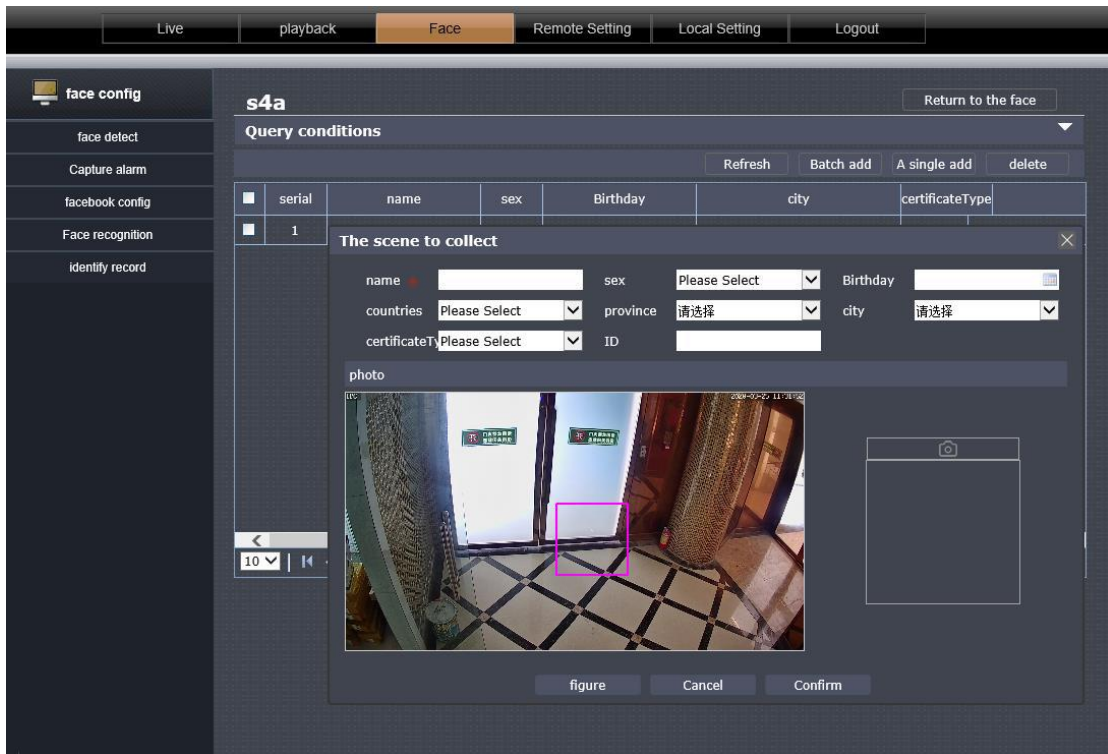


5.2.3 ways to register and add face

5.2.1 Number1: Add face mode (recommend)

Adding method: Click "Single Add-Add Face-Catalog", select the faces and characters you want to add, and then click OK.





5.2.2 Number2: Real time capture

Add method: Select "Single Add-Add Face-Live Capture", the person standing in the center of the screen, click the small camera logo on the right to capture, fill in the personal information of the capture person, and click OK.

5.2.3 Number3: Fast storage/Snap shot

Add method: In the video preview interface, when a person enters the screen to capture the face normally, select the captured face, double-click to enter a quick storage, fill in personal information and click OK.

