




UHF-05 UHF Desktop Reader and writer (to issue card's number)

UHF-105	UHF-115	UHF-05
UHF Long range reader 1-5M	UHF Long range reader 5-15M	USB Card Issuing Device
		

Features:

1	Self-intellectual property;
2	Support ISO18000-6C(EPC C1G2) , ISO18000-6B protocol tag;
3	860~868MHz, 902~928MHz frequency band(frequency customization optional);
4	FHSS or Fix Frequency transmission;
5	RF output power up to 13dbm(adjustable);
6	No external power source needed;
7	Built-in antenna with effect distance up to 200mm*;
8	Support USB2.0 interface with VSP(Virtual Serial Port) or HID mode;
9	Slim outline;
10	Provide SDK and demo software to facilitate further development.
* Effective distance depends on protocol, tag and environment.	

Description:

UHF-05 is a high performance UHF RFID desktop Reader. It is designed upon fully self-intellectual property. Based on proprietary efficient digital signal processing algorithm, it supports fast tag read/write operation with high identification rate. It can be widely applied in many RFID application systems such as logistics, access control, attendance system, anti-counterfeit and industrial production process control system.



UHF Card Issuing Device

Connect USB data wire between Device and PC, after 30 seconds system testing period, then punch the uhf card



Label protocol	IS018000-6C (EPC GEN2) IS018000-6B
Operating frequency	(920-925MHz) (902-928MHz)



16.6mm



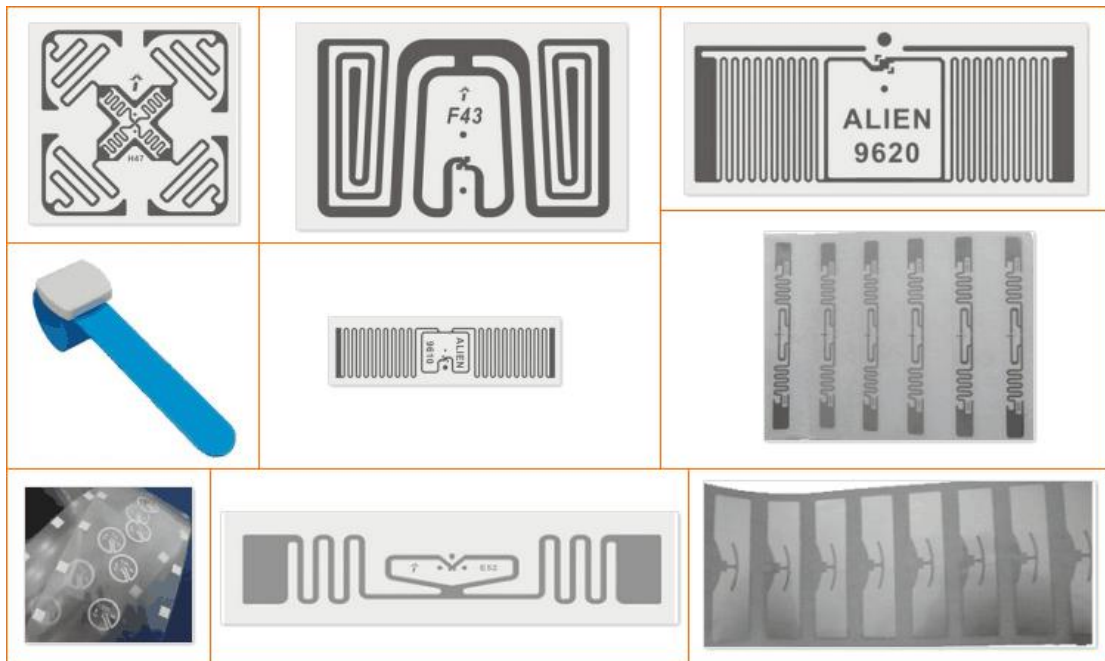


UHF Cards and Tags(compatible with UHF-105 and UHF-115) - do LOGO customized FREE if based on 2000pcs

Model	UHF-01	UHF-02	UHF-03	UHF-04
Picture				

UHF Cards and Tags(compatible with UHF - 105 and UHF - 115)

Model	UHF-04	UHF-05	UHF-06	UHF-07
Picture				





Latest Demo Ver:3.3.0.2

RFID Reader Demo - [Ver:3.3.0.2]

DISCONNECT(C) LANGUAGE RCP LOGGING(L) HELP(H)

READ DEMO | BASE SETTINGS | ISO18000-6B READ&WRITE | EPC(GEN 2) READ&WRITE

EPC(GEN 2) Identify

Card No: 00-00-00-00-00-00-00-00-00-00 Identify(E)

EPC(GEN 2) Read

Block: 1-EPC Address: 2 Length: 2 (Length not more 16)

Data(HEX): Read(A)

Data(ASCII):

EPC(GEN 2) Write Card

Block: 1-EPC Address: 2 Length: 2 (Length not more 16)

Data(HEX): 00-00 Write(B)

Data(ASCII): 00

Quick Write Card Zone(Weigand Card)Max 4 Byte

Card Type: 3byte(WG26) Card Position: 0 Auto Add 1 Auto Hex

DEC HEX WG Plus 1

Write Num: 00000000 00-00-00 000,00000 Minus 1 Write Tag(F12)

Be Written Num:

Time	RCP Type	RCP Packet(HEX)	Time	Current Status
14:24:13 524	设备回复	CC FF FF BD 00 08 01 08 01 00 05 FF 03 FF 61	14:24:13 514	操作 基本参数 成功
14:24:13 534	下发命令	7C FF FF 31 32 00 23	14:24:13 524	操作 成功
14:24:13 534	设备回复	CC FF FF 31 00 03 01 08 01 F8	14:24:13 544	操作 输出参数 成功
14:24:13 654	设备回复	CC FF FF 31 00 03 01 08 01 F8	14:24:13 654	操作 输出参数 成功

CONNECTED | USB | V1.15 | Type:PC - Version:V3.67 - Address: 65535 | 操作 输出参数 成功